

# PLAINS ART MUSEUM

## Plains Art Museum Presents *Third Space: New Work by Liza Sylvestre*

### Press Release

For Immediate Release (June 2019)

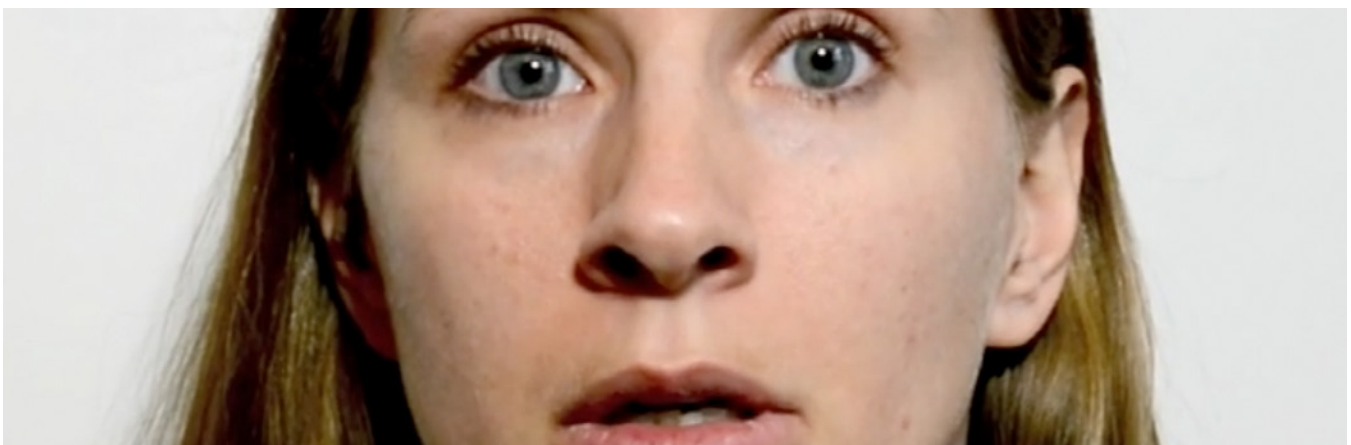
Fargo, N.D. – Plain Art Museum is thrilled to announce a solo exhibition titled *Third Space*, featuring new work by Minnesota-based emerging artist Liza Sylvestre. The exhibition, which opened on June 4, 2019, is on display in the Xcel Energy Gallery located on the Museum's 2nd floor through August 10, 2019.

Exploring the ways in which senses alter experience and perception, Liza Sylvestre's work operates at the intersection of our senses and communication. Experiencing life with progression into deafness as a child and later implanted with a bionic computer-ear, her definitions of language and communication are continuously shifting. Sylvestre's multidisciplinary work is personal yet social, and empathic yet layered. *Third Space* includes recent video work and drawings by Sylvestre that investigate her interaction with music, the written word, and verbal communication.

Liza Sylvestre is an artist and educator living in Minneapolis, MN. Sylvestre received her BA in Fine Art from the University of Minnesota and a recent MFA from University of Illinois Urbana Champaign. She has exhibited her work nationally and has been the recipient of numerous awards, commissions, and scholarships. The public is also invited to Sylvestre's artist talk on Thursday August 6, 2019 at 6:00 pm where she will introduce her multidisciplinary work exploring the intersection of our senses and communications and challenging normative design. Following the artist talk she will lead a "blind tour" at Plains Art Museum as a part of her inclusion in the Museum's landmark exhibition, *The Other Four*. During this unique experience, participants will wear a pair of low vision simulator glasses while Sylvestre leads a guided, visual description tour through the galleries.

Plains Art Museum is the largest art museum in the Dakotas and Western Minnesota and is general admission free thanks to strong and growing support from over 800 households and businesses. The Museum manages a permanent collection of over 4,000 objects, organizes and presents dozens of annual exhibitions, facilitates public art projects, and leads over 200 educational programs and experiences for all ages each year. The Museum, and its Katherine Kilbourne Burgum Center for Creativity, is located at 704 First Avenue North in downtown Fargo. For more information about visiting or supporting your art museum, visit [www.plainsart.org](http://www.plainsart.org).

Contact: Andrew J. Maus, Director & CEO, 701.551.6123, [amaus@plainsart.org](mailto:amaus@plainsart.org)



Liza Sylvestre, *Wha\_ i\_ I \_old you a \_\_ory in a language I \_an \_ear*, 2014

704 First Avenue North  
Fargo North Dakota  
701.551.6100 • [plainsart.org](http://plainsart.org)

