

PLAINS ART MUSEUM

began as the Red River Art Center in 1965. It was housed in the old Moorhead, Minnesota post office, now home to the Rourke Art Gallery + Museum. The Center changed its name to Plains Art Museum in 1975. In October 1997, the Museum opened in its current facility, a renovated warehouse in historic downtown Fargo, North Dakota. In 2012, the Museum opened the Katherine Kilbourne Burgum Center for Creativity.



is for

PLAINS ART
MUSEUM

THE BUILDING

The current home of Plains Art Museum started life as an International Harvester Company Warehouse. The building was built in 1904 with the first floor for shipping and receiving, the second floor for display, sales and accounting and the third floor was for parts. International Harvester remained in the building until about 1970. After that the building housed various functions including a furniture store until Plains Art Museum acquired it and began renovations in 1993.

THE GALLERIES AND THE COLLECTION

Plains Art Museum has three main galleries that were built as “a building within a building.” They have the ability to be kept at controlled temperature and humidity levels to protect the art within. The controlled rooms continue to the basement level to house the museum’s permanent collection. The galleries provide approximately 9000 square feet of exhibition space on three floors.

The permanent collection contains more than 4,000 pieces including regional art, traditional Native American art, contemporary art, and traditional folk art. *The North Dakota Mural* by artist James Rosenquist, installed permanently on the two-and-a-half story wall of the Ruth and Seymour Landfield Atrium.

THE CENTER FOR CREATIVITY

In September 2012, Plains Art Museum opened the 27,000 total square feet Katherine Kilbourne Burgum Center for Creativity in 3 connected historic buildings to the west of the main museum building. The C4C contains a ceramics studio with 11 pottery wheels, 2 handbuilding ceramics studios, a painting studio, a multipurpose studio and a small gallery space. The C4C hosts classes for all ages taught by a team of Plains Art Museum Teaching Artists.

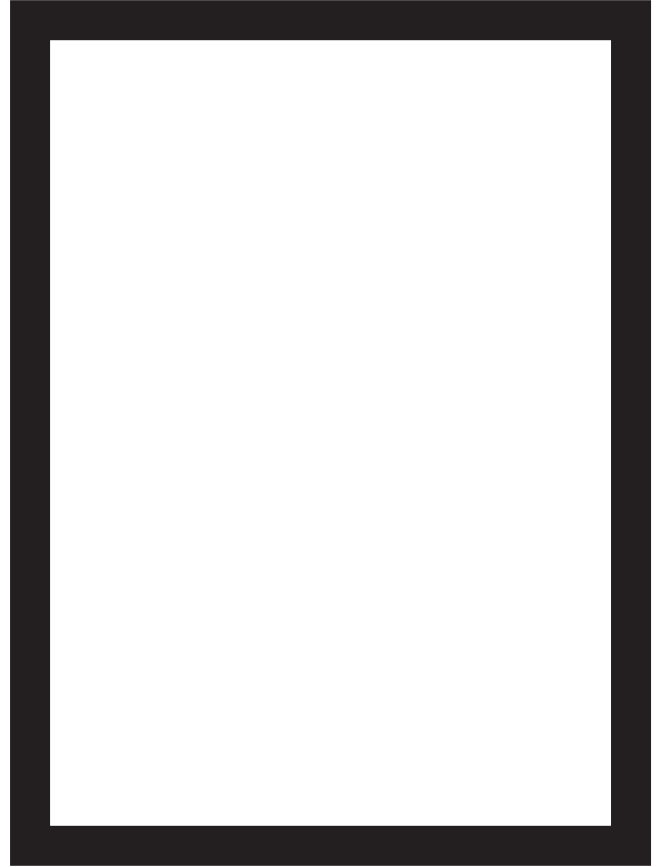
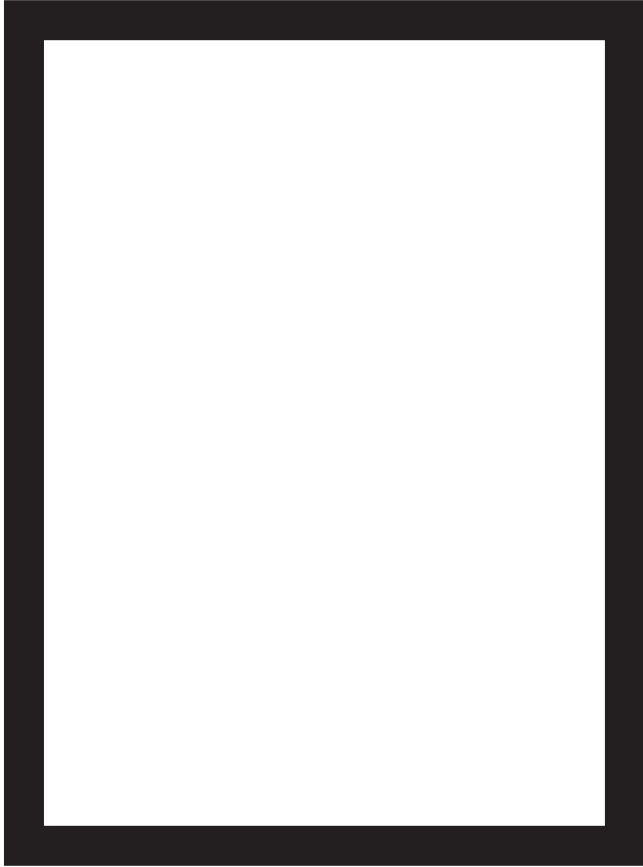


CURATE AN EXHIBIT

CURATE: to create and organize an art exhibition

CURATOR: a person who organizes art exhibitions

CHOOSE 3 ARTWORKS from the image bank you feel could be exhibited or shown together. Consider what the art is made from, the colors it uses, what pieces have in common, the theme, etc. Draw or cut and glue the images and label the 3 artworks you chose.



Title: _____

Artist: _____

Title: _____

Artist: _____

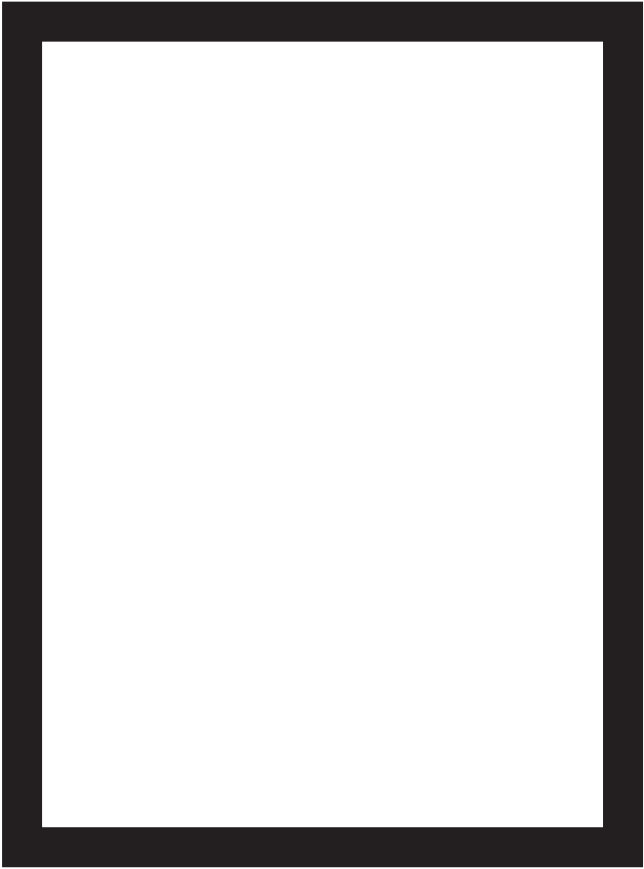
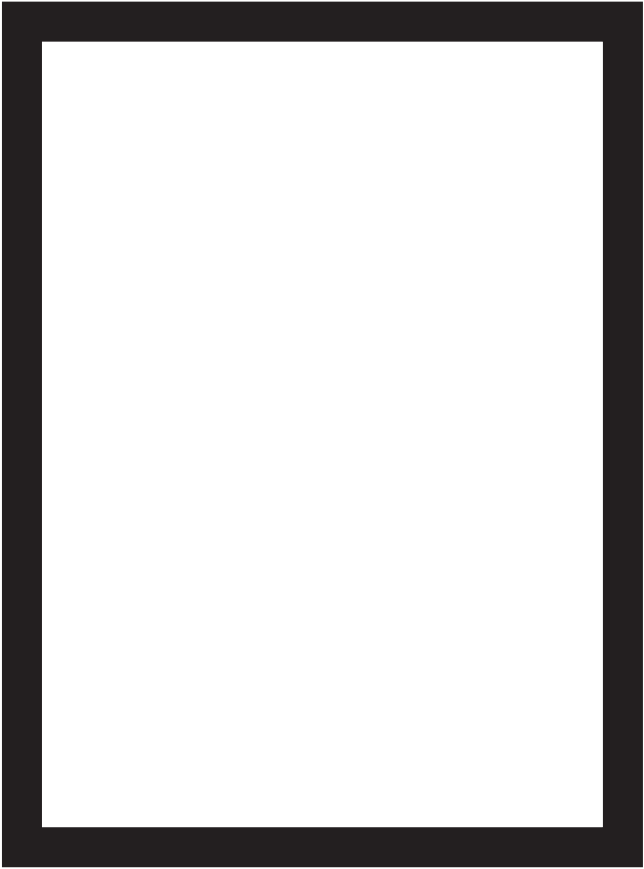
Title: _____

Artist: _____

Write a curator's statement explaining why you put these artworks together (consider what the art is made from, what the pieces have in common, the themes, colors, textures, etc.).

ART BUYER

CHOOSE 3 ARTWORKS from the image bank for 3 different places.
Draw or cut and glue the images into the frames below.



- 1.** Choose an artwork for your room. Explain why you chose this artwork and why it fits in this space.

Title of Artwork: _____

Artist: _____

- 2.** Choose an artwork for your classroom. Explain why you chose this artwork and why it fits in this space.

Title of Artwork: _____

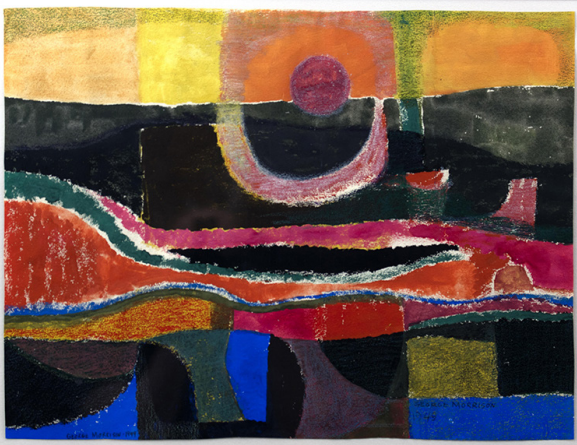
Artist: _____

- 3.** Choose an artwork for _____ .
Explain why you chose this artwork and why it fits in this space.

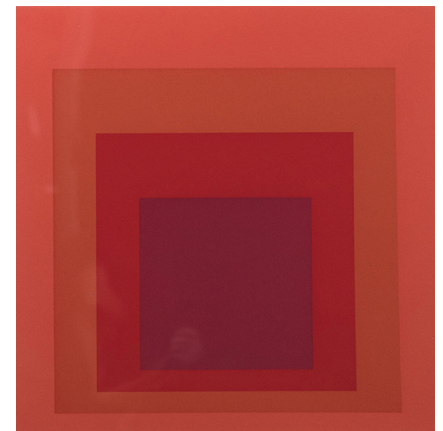
Title of Artwork: _____

IMAGE BANK

Use the images below to complete the worksheets. This artwork from the Plains Art Museum permanent collection will be included in the exhibition, *Behold the Light*, on display fall 2020. When this exhibition opens, come visit the artwork in person!



left to right: George Morrison, *Sun and River* • Luis Jiménez, *End of the Trail (with Electric Sunset)* • John Offutt, *Cobalt Vase*



left to right: Helen Frankenthaler, *Barcelona* • Jaune Quick-to-See Smith, *Ghost Dance* • Josef Albers, *JHM-1*