

# PLAINS ART MUSEUM

## Now Open at Plains Art Museum: Hazel Belvo: Heart and Soul

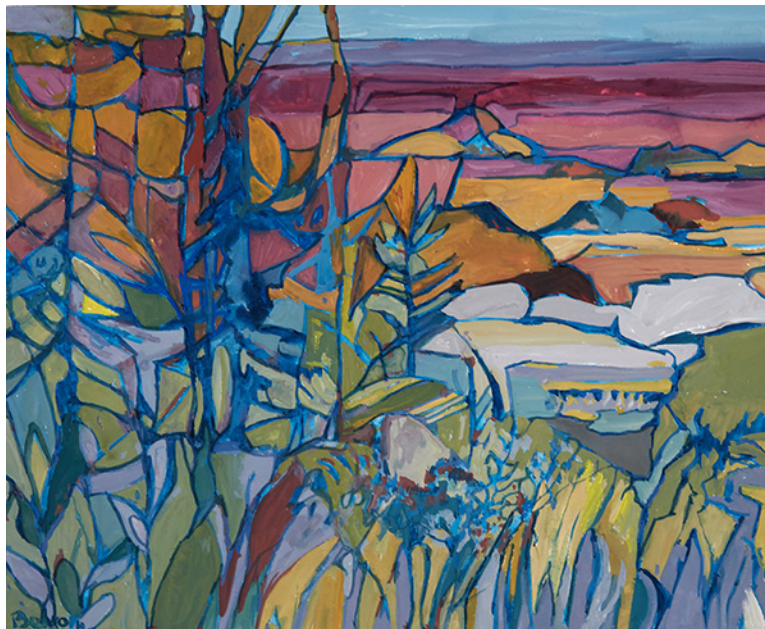
### Press Release

For Immediate Release (September 2022)

Fargo, North Dakota – With much anticipation, Plains Art Museum is pleased to announce *Hazel Belvo: Heart and Soul* is on display through May 27, 2023 in the Museum’s William and Anna Schlossman Gallery.

Hazel’s work is the fifth exhibition in Plains Art Museum’s “Mothers of Invention” series, which acknowledges and elevates the contributions of influential, late-career women artists in the Upper Midwest. Over her almost 70 year-long career, Hazel Belvo has been a prominent contributor to both the arts and feminist advocacy in the region. Hazel co-founded the Women’s Art Registry of Minnesota (WARM), was Chair of the Fine Arts Dept. at the Minneapolis College of Art and Design (MCAD), and taught at the Grand Marais Artist Colony.

Born in Ohio and educated at the Dayton Art Institute, Hazel started her artistic explorations with the painting of individual cellular structures. Over time, her imagery would develop to include expansive landscapes, powerful trees, and portraits that expressed love, determination, and strength. This exhibition features works from throughout her career, including recently produced paintings and a selection of Hazel’s travel journals.



Supporting Programs for *Hazel Belvo: Heart and Soul* include an artist talk on Thursday, November 3 and the Printing in Pairs workshop, Juxtaposition, on Friday November 4. Visit <https://plainsart.org/exhibitions/hazel-belvo-heart-and-soul/> for cost, time, and membership discount information.

This exhibition is made possible thanks to support from the Demarest Bowers Morrow Exhibition Fund, FM Area Foundation and the Museum’s community of PlainsArt4All members and donors.

Plains Art Museum is the largest art museum in the Dakotas and Western Minnesota. It is general admission free and educationally-focused thanks to strong and growing support from over 800 households and businesses. The Museum manages a permanent collection of over 4,000 objects, organizes and presents dozens of annual exhibitions, facilitates public art projects, and leads over 200 educational programs and experiences for all ages each year. The Museum, and its Katherine Kilbourne Burgum Center for Creativity, are located at 704 First Avenue North in downtown Fargo. For more information about visiting or supporting your art museum, visit [plainsart.org](https://plainsart.org).

Contact: Andy Maus, Museum Director / CEO, [amaus@plainsart.org](mailto:amaus@plainsart.org), 701.551.6123.

Hazel Belvo, *North Haven, Maine, Rocks*, 2013, 9 ½ x 11 ¾ in., Gouache on paper

704 First Avenue North  
Fargo North Dakota  
701.551.6100 • [plainsart.org](https://plainsart.org)

